

2022-2027

BOND

PROGRAM

City of San Antonio



PUBLIC WORKS

District 2 Parks

Public Input Meeting

May 24, 2023 | Presented by Public Works

Agenda

- Welcome and Introductions
- Project Information
- Existing Site Amenities
- Proposed Site Amenities
- Examples of Site Amenities
- Project Next Steps
- Public Comments & Questions

2022-2027

BOND

PROGRAM

City of San Antonio



District 2 Parks

City Team and Design Team

City Council District 2, Councilmember Jalen McKee-Rodriguez

Jeff Wurzbach, Landscape Architect, Public Works Department

Tony Forshage, Manager, Parks and Recreation Department

Caleb Etheredge, Partner, Coral Studio

Kaidan Nguyen, Partner, Coral Studio



PROPOSED 2022-2027

BOND PROGRAM

City of San Antonio



INFORMATION GUIDE



APPROVED

May 7, 2022

District 2 Parks

Project Information

- Funding: \$1,500,000
- Bond Language: Construct general park and rehabilitation improvements of park facilities within available funding. Parks may include: Milam Wesley Tealer Park and Dellcrest Park.





Coral Studio

LANDSCAPE ARCHITECTURE / URBAN PLANNING

Caleb Etheredge, PLA

caleb@coral-studio.com

(210) 963-7447

Kaidan Nguyen, PLA

kaidan@coral-studio.com

(210) 963-7447

DISTRICT 2 PARKS

PUBLIC INPUT MEETING

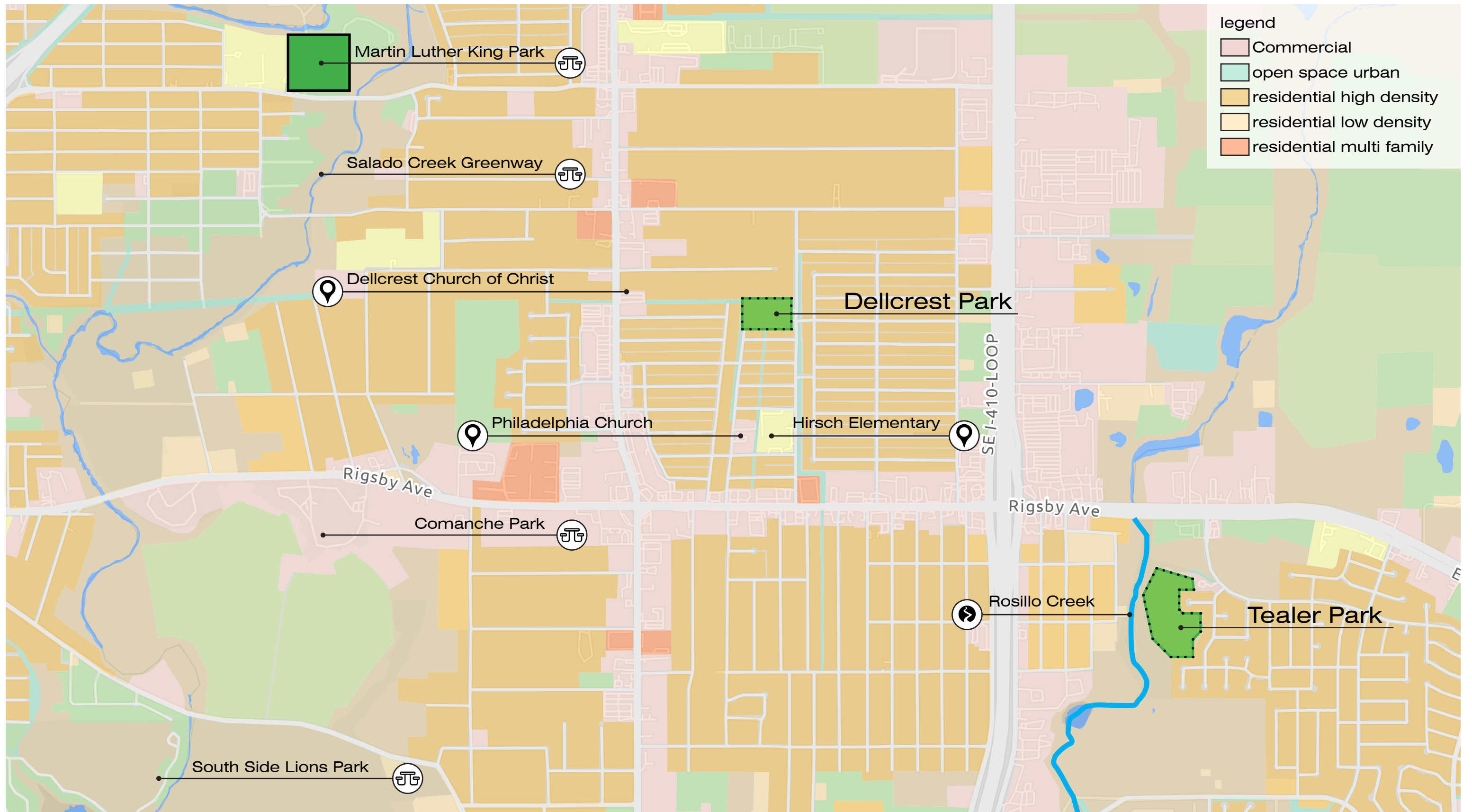
MAY 24, 2023

DELLCREST PARK



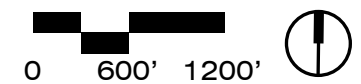
TEALER PARK





Bexar current land use (2017)

DISTRICT 2 PARKS:CONTEXT ANALYSIS



Scale: 1" = 1200'-0"



DISTRICT 2 PARKS - DELLCREST PARK

PUBLIC INPUT MEETING

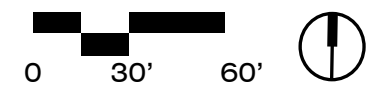
MAY 24, 2023



- Total Area: 6 Acres (720 ft x 375 ft)
- open field, playground, parking lot, portable restroom



DISTRICT 2 PARKS - DELLCREST PARK: EXISTING AERIAL





open field & baseball backstop



park signage



lighting



bus stop



playground



porta potty enclosure



parking lot

DISTRICT 2 PARKS - DELLCREST PARK:EXISTING SITE PHOTOS

INITIAL PROGRAM LIST:

Concrete Walking Trail

Trail Lighting

Shade Structure

Playground Shade

Expanded Playground

Multi-Use Field



concrete trail with seating opportunities



mile maker



trail lighting



shade structure with seating opportunities



metal shade structure

DISTRICT 2 PARKS - DELLCREST PARK: PROGRAM LIST PROGRAM IMAGERY



DISTRICT 2 PARKS - DELLCREST PARK:FUNCTION USE DIAGRAM





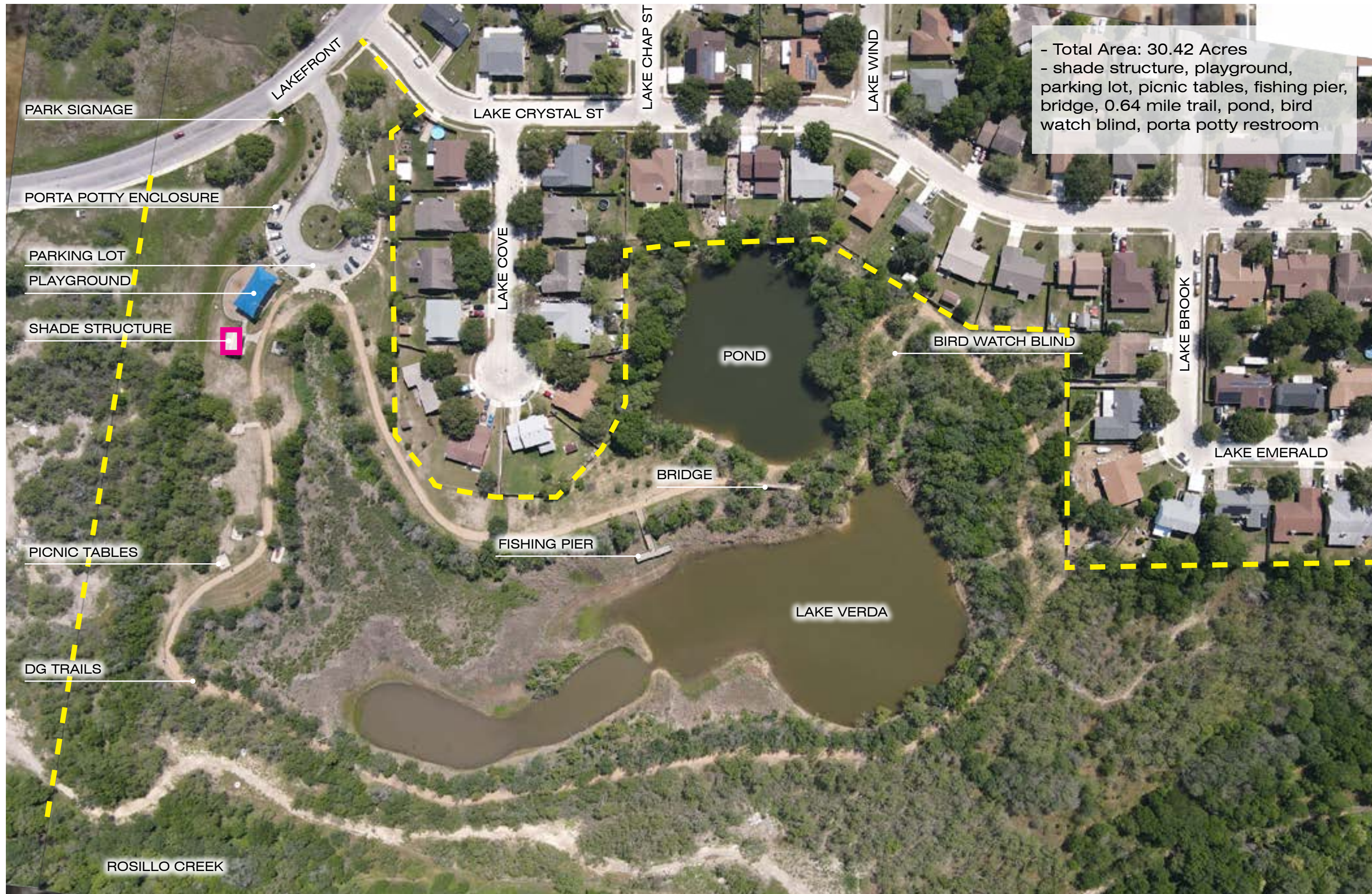
DISTRICT 2 PARKS - DELLCREST PARK:FUNCTION USE DIAGRAM - TREE PLAN

DISTRICT 2 PARKS - TEALER PARK

PUBLIC INPUT MEETING

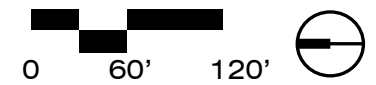
MAY 24, 2023





- Total Area: 30.42 Acres
 - shade structure, playground,
 parking lot, picnic tables, fishing pier,
 bridge, 0.64 mile trail, pond, bird
 watch blind, porta potty restroom

DISTRICT 2 PARKS - TEALER PARK: EXISTING AERIAL





lake verda



fishing pier



lighting



park signage



bridge



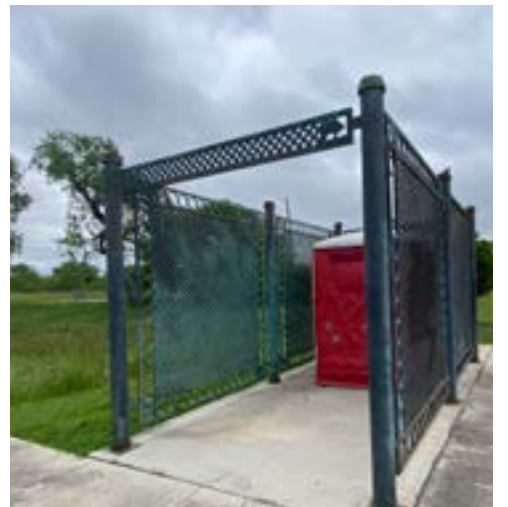
bird watching blind



decomposed granite trail



parking lot



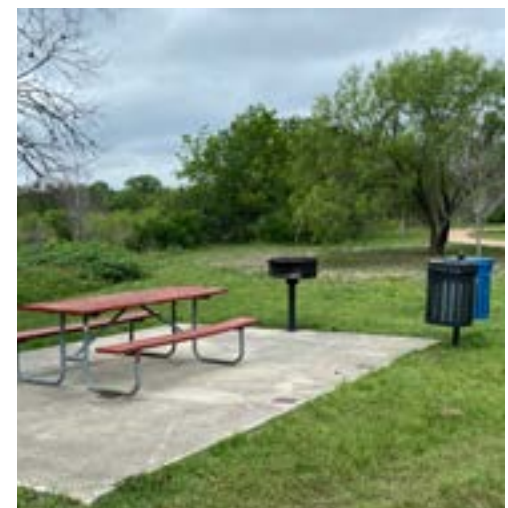
porta potty enclosure



playground with fabric shade canopy



shade structure with picnic tables



picnic table



mile marker sign

DISTRICT 2 PARKS - TEALER PARK: EXISTING SITE PHOTOS



INITIAL PROGRAM LIST:

New Fishing Pier

Playground Safety Fencing

Wetland Pond Plantings

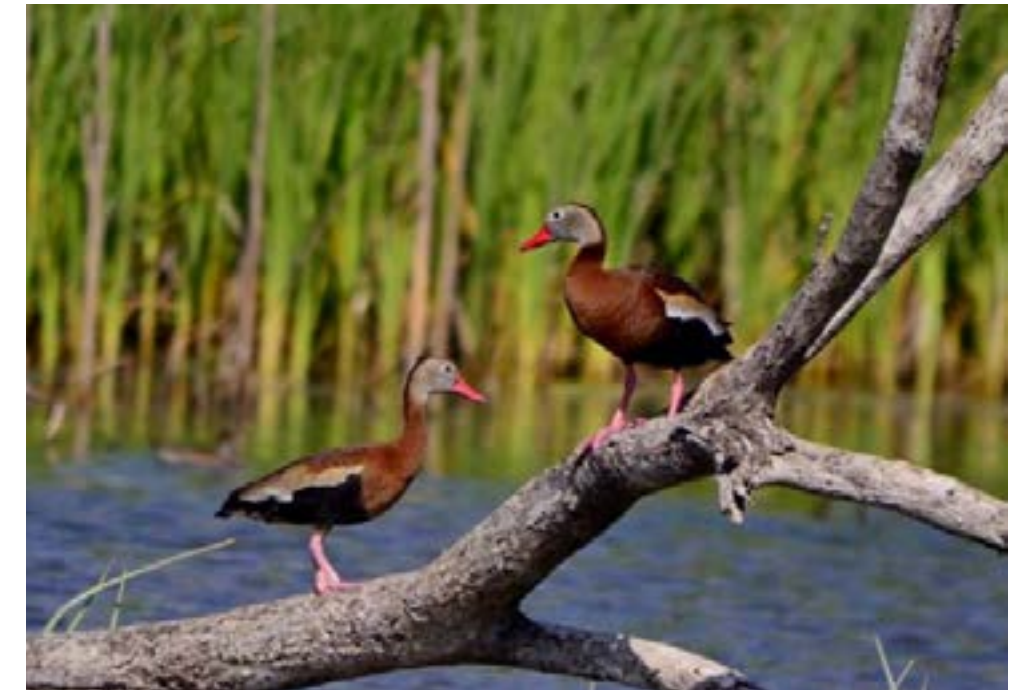
Half Court Basketball



composite decking pier

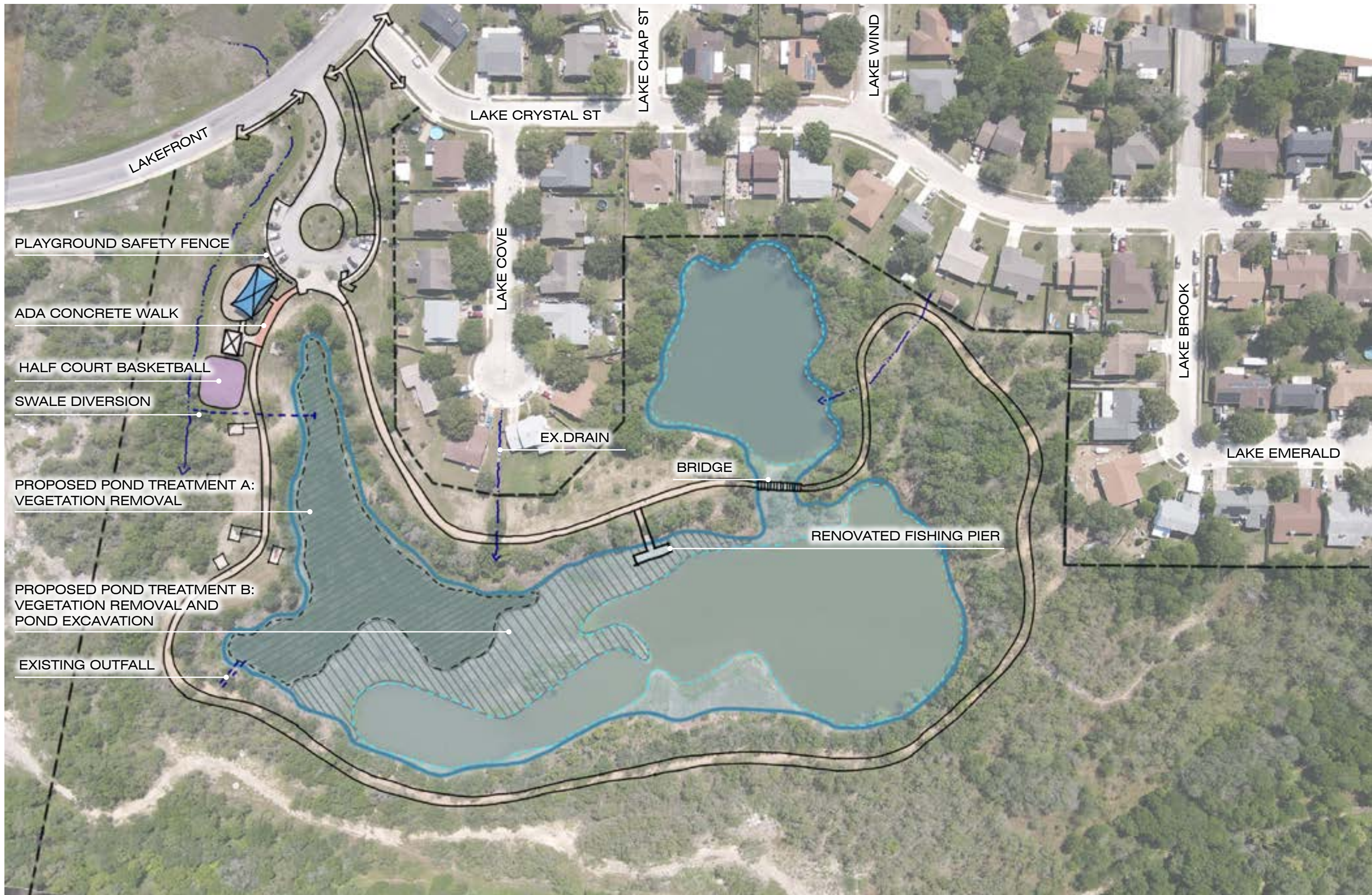


wetland planting

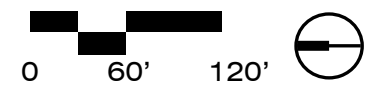


wildlife habitat

DISTRICT 2 PARKS - TEALER PARK: INITIAL PROGRAM LIST & IMAGERY



DISTRICT 2 PARKS - TEALER PARK: FUNCTION USE DIAGRAM



Schematic Opinion of Probable Construction Costs

Total Bond Construction Budget: \$930,000

Dellcrest Park

Concrete Trail (inner loop): \$125,000
6' wide concrete sidewalk

Concrete Trail (outer loop): \$100,000
6' wide concrete sidewalk

Lighting at Concrete Trail (inner loop): \$150,000
pedestrian light poles at every 100 feet along the trail

Shade Structure: \$60,000
includes freestanding shade structures to provide seating areas for park programming

Playground Shade: \$50,000 - \$100,000
fabric shade structure at existing playground and/or new equipment

Expanded Playground: \$100,000 - \$200,000
new playground equipment to include swings, and other elements defined by the community

ADA Parking Improvements: \$50,000
replacement of existing asphalt at ADA parking spaces with concrete, along with providing new striping and signage to meet current codes

Tealer Park

Renovated Fishing Pier: \$75,000
composite deck fishing pier with new safety rail over existing posts and beams

Playground Fencing: \$30,000
4 foot wire mesh fence to separate parking from playground

Sports Courts: \$60,000
post tension concrete half court basketball

Wetland Pond Plantings: \$200,000
creation of plantings in shallow shelves throughout the pond to create fish habitat, natural filtration, and pond beautification. Provide new water source through diverting water from swale

Additional Trail Connections: \$75,000
new decomposed granite trails to connect new neighborhoods, expanding the trail network

ADA Parking Improvements: \$50,000
replacement of existing asphalt at ADA parking spaces and gravel trail connection to pavilion with concrete, along with providing new striping and signage to meet current codes

**Total Potential Construction Costs:
\$1,125,000 - \$1,275,000**

Thank you for Coming! For Information, Contact

Jeff Wurzbach

(210) 207-0763

Jeffrey.Wurzbach@sanantonio.gov

CONNECT WITH US!    

#SA2022Bond | www.sanantonio.gov/2022Bond